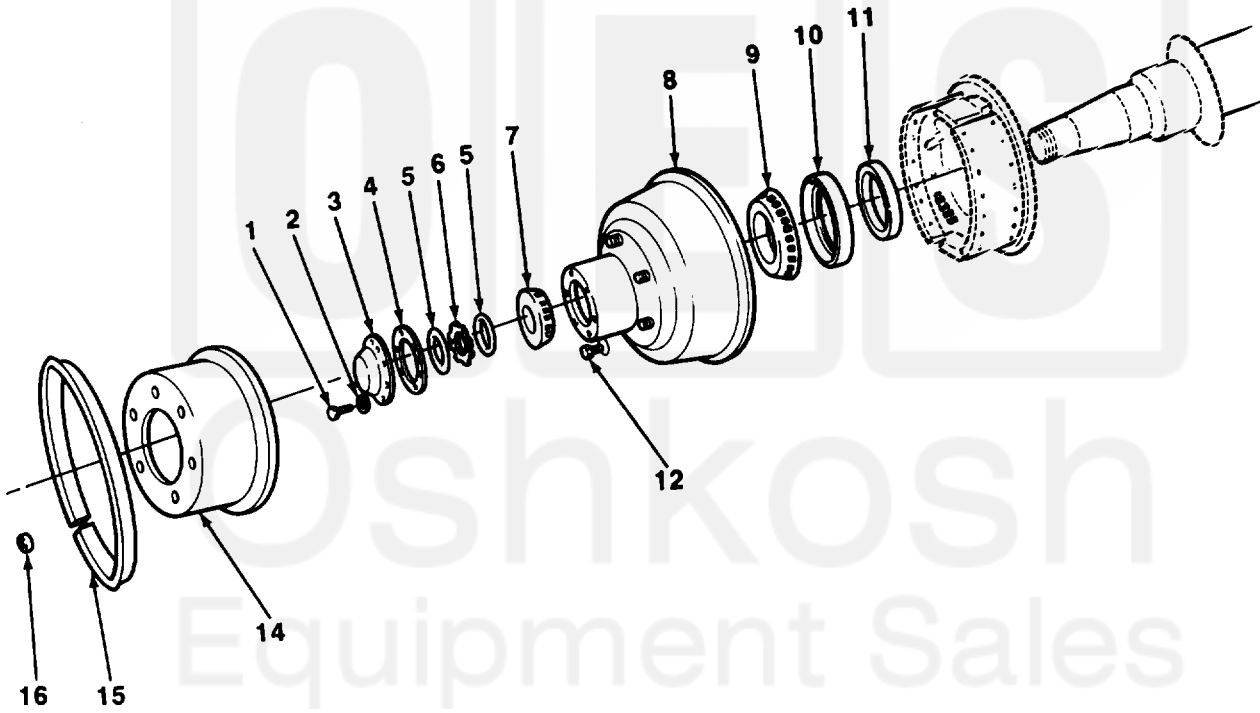
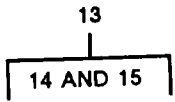


SECTION II

TM 9-2330-246-24P



TA506023

FIGURE 30. BRAKEDRUM AND BEARINGS.

SECTION II TM9-2330-246-24P				(5)	(6)
(1) ITEM NO	(2) SMR CODE	(3) CAGEC	(4) PART NUMBER	DESCRIPTION AND USABLE ON CODES (UOC)	QTY
GROUP 13 WHEELS AND TRACKS					
GROUP 1311 WHEEL ASSEMBLY					
FIG. 30 BRAKEDRUM AND BEARINGS					
1	PAOZZ	96906	MS90725-31	BOLT,MACHINE CAP ATTACH	12
2	PAOZZ	96906	MS35338-45	WASHER,LOCK CAP ATTACH	12
3	PAOZZ	19207	8710744	COVER,ACCESS HUB	2
4	PAOZZ	19207	8710743	GASKET HUB CAP	2
5	PAOZZ	19207	10896720	NUT,PLAIN,HEXAGON HUB BEARING ADJUSTING	4
6	PAOZZ	19207	7954291	WASHER,KEY HUB BEARING ADJUSTING NUT	2
6	PAOZZ	19207	10896695	WASHER,KEY	2
7	PAOZZ	96906	MS19081-112	BEARING,ROLLER,TAPE WITH CUP,OUTER	2
8	PBOZZ	19207	8710740	WHEEL,PNEUMATIC TIR LI	1
8	PBOZZ	19207	8710741	HUB AND DRUM ASSY RH	1
9	PAOZZ	21450	712288	BEARING,ROLLER,TAPE HUB,INNER	2
10	PAOZZ	19207	7979349	SEAL,PLAIN ENCASED INNER BEARING	2
11	PAOZZ	19207	7409553	RING,WIPER WHEEL BEARING OIL SEAL	2
12	PAOZZ	96906	MS53068-1	NUT,CAP,DUAL WHEEL HUB,INNER,LH	6
12	PAOZZ	96906	MS53068-2	NUT,CAP,DUAL WHEEL HUB,INNER,RH	6
13	AOOOO	96906	MS53044-5	WHEEL,PNEUMATIC TIR SEMITRAILER DOLLY	4
14	XDOZZ	19207	86589008	.WHEEL,PNEUMATIC TIR WITHOUT SIDE RING	1
15	PAOZZ	96906	MS53045-3	.RING,SIDE,AUTOMOTIV PNEUMATIC WHEEL	1
16	PAOZZ	96906	MS51983-4	NUT,PLAIN,SINGLE BA HUB,OUTER,RH	6
16	PAOZZ	96906	MS51983-3	NUT,PLAIN,SINGLE BA HUB,OUTER,LH UOC:928,931,934,935,936,937,938,939, 940,941,942,948,949,950,951	6
END OF FIGURE					

